



Aerial  
**Thermal**  
Imaging

*"Capture Thermal and  
Colour imagery at heights,  
safely and efficiently"*

# Thermal Inspection Services

# About Us

Altitude Imaging has been providing a comprehensive commercial drone service specialising in the provision of aerial photography, video, survey and inspection solutions for a range of industries since 2012.

Based in Perth, Altitude Imaging is one of Australia's most experienced certified commercial drone operations companies with a track record of successful projects across city, urban and remote country locations.

Altitude Imaging is fully certified and insured, the company holds CASA ReOC 0669 and our pilots all hold CASA Remote Pilots Licenses.

## Thermal Inspection and Survey Services

Altitude Imaging provides aerial thermal imaging services for asset inspection, survey and mapping using professional thermal cameras and drones.

Our services safely and quickly detect hotspots and areas with abnormal temperatures.

Utilising FLIR 640 resolution thermal cameras combined with 20.8MP to 42MP colour cameras we deliver outstanding high resolution inspection imagery. Our inspection equipment is fully gyro stabilised and captures radiometric images and video.

Incorporating aerial survey and mapping techniques we can identify heat sources over large areas. Ideal for applications in the coal industry, our thermal surveys can provide highly accurate information with georeferenced thermal orthomosaics and heat maps.

Our team delivers high-resolution thermal and digital photographic records in either unedited or fully processed formats with inspection reports.

*"Altitude Imaging's Thermal Inspection Service offers a productive and safe way to rapidly and frequently inspect assets at height."*

## Features and Benefits

- ✓ Industry leading FLIR thermal imaging technology fitted to DJI M210 IP43 rated weather resistant drone systems.
- ✓ Simultaneously capture both thermal and high resolution colour imagery.
- ✓ Fast, accurate and immediate temperature measurement and fault detection.
- ✓ Our service is non-destructive and non-invasive providing essential and reliable information.
- ✓ Our inspection services allow you to rapidly and frequently inspect assets at height and inaccessible areas without exposing personnel to health and safety risks.
- ✓ GPS positioning data is collected with each image allowing precise locations to be confirmed.
- ✓ Live video feed and constant interactive control of all cameras enables your site engineers to work with our team and immediately view and assess issues.
- ✓ Our Radiometric thermal cameras record temperatures for every pixel enabling detailed analysis on site or post inspection engineering assessment and reporting.
- ✓ Can be combined with our Tethered Drone Service to provide unlimited flight time.

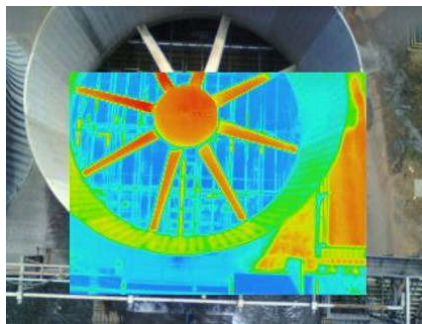
*"Our Thermal Inspection Services capture imagery with pinpoint precision, focusing on specific structures or large areas."*

# Applications



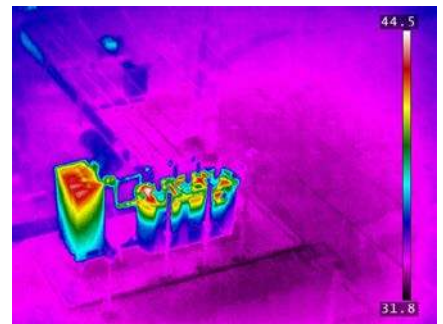
## Building Inspection

- Diagnose the condition of buildings by detecting thermal bridges and other anomalies.
- Commercial building inspections.
- Roof Inspections.
- Air-conditioning efficiency, air leaks and thermal loss.
- Moisture detection.
- Delaminating Concrete.



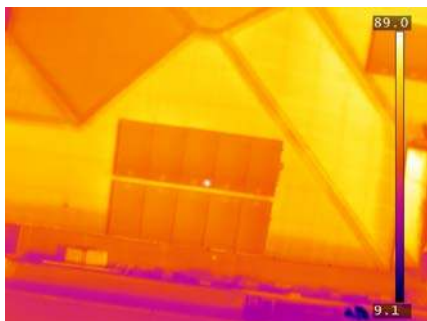
## Industrial & Mine Site Inspection

- Reliable and safe thermal inspection at height.
- Avoid exposing workers to dangerous environments.
- Inspect without disrupting operations.
- Towers, pipelines, flare stacks, process plants.
- Thermal survey of stockpiles and mine sites.
- Onshore and offshore.



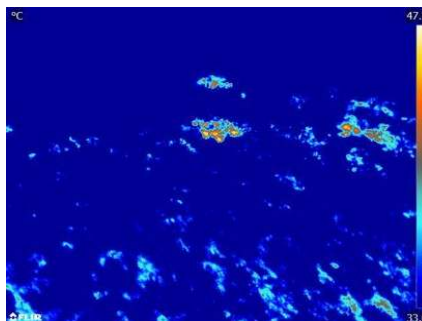
## Power Distribution Inspection

- With improved reliability and precision, we image extensive powerline networks with unparalleled detail.
- Detect abnormal heating associated with high resistance or excessive current flow.
- GPS records allow exact locations to be identified.



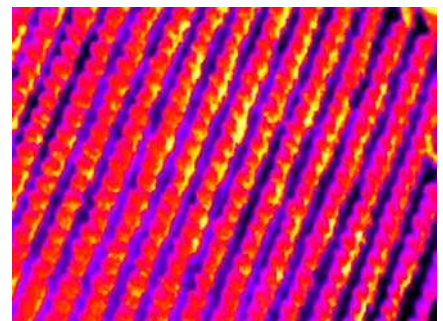
## Solar Panel Inspection

- Inspect and detect defects in panels with high resolution visual and thermal imagery.
- No access to building roofs required.
- Inspect a few or thousands of solar panels.
- Ideal for PV Solar Farms.



## Environmental & Biosecurity

- Feral animals, invasive species and pests.
- Monitoring and population density.
- Day or night operations.
- Area heat maps and surveys.
- Thermal survey orthomosaics.



## Precision Agriculture

- Spatial coverage over large or small areas at repetitive intervals.
- Soil temperatures and moisture levels for seeding and growth monitoring.
- Irrigation monitoring and scheduling.

*"Our Thermal Inspection Services capture imagery with pinpoint precision, focusing on specific structures or large areas."*

# Versatile Airborne Cameras



- Altitude Imaging uses the latest tethered drone systems that can be configured to carry cameras in three configurations: -
  - Single downward camera
  - Single upward camera
  - Dual downward cameras
- Fully stabilized precision gimbals
- Our professional standard camera options include: -
  - 4K Video/20.8MP Stills Camera
  - Multiple fixed and zoom lens options
  - 640 resolution Thermal Camera
- Thermal Camera Specifications: -
  - Manufacturer – FLIR/DJI
  - Version – Professional Radiometric
  - Resolution – 640 x 512
  - Lens – 13mm
  - Full Frame Rate – 30Hz
  - Sensitivity – 50mK
  - Digital Zoom – up to 8x
- Live, constant and interactive control of all cameras.
- Alternative Thermal inspection systems for survey and special projects available including: -
  - Long duration Microdrone Md4-1000 precision survey drones .
  - 42MP Sony A7 series colour cameras
  - PPK and RTK positioning options.

*“Altitude Imaging has been providing professional aerial drone services since 2012. We are Certified, Accredited and Approved to national and international standards.”*

## Want To Know More

Call Us: 08 92407313  
Email Us: info@altitude-imaging.com  
Website: www.altitude-imaging.com  
Drop By: Unit 17, 23 Gibberd Road,  
Balcatta WA 6021



*“Our Thermal Inspection Services capture imagery with pinpoint precision, focusing on specific structures or large areas.”*